

PART OF NW 1/4 SEC 23, & PART NE 1/4 SEC 22, T.5N., R.1W., S.L.B. & M. 336

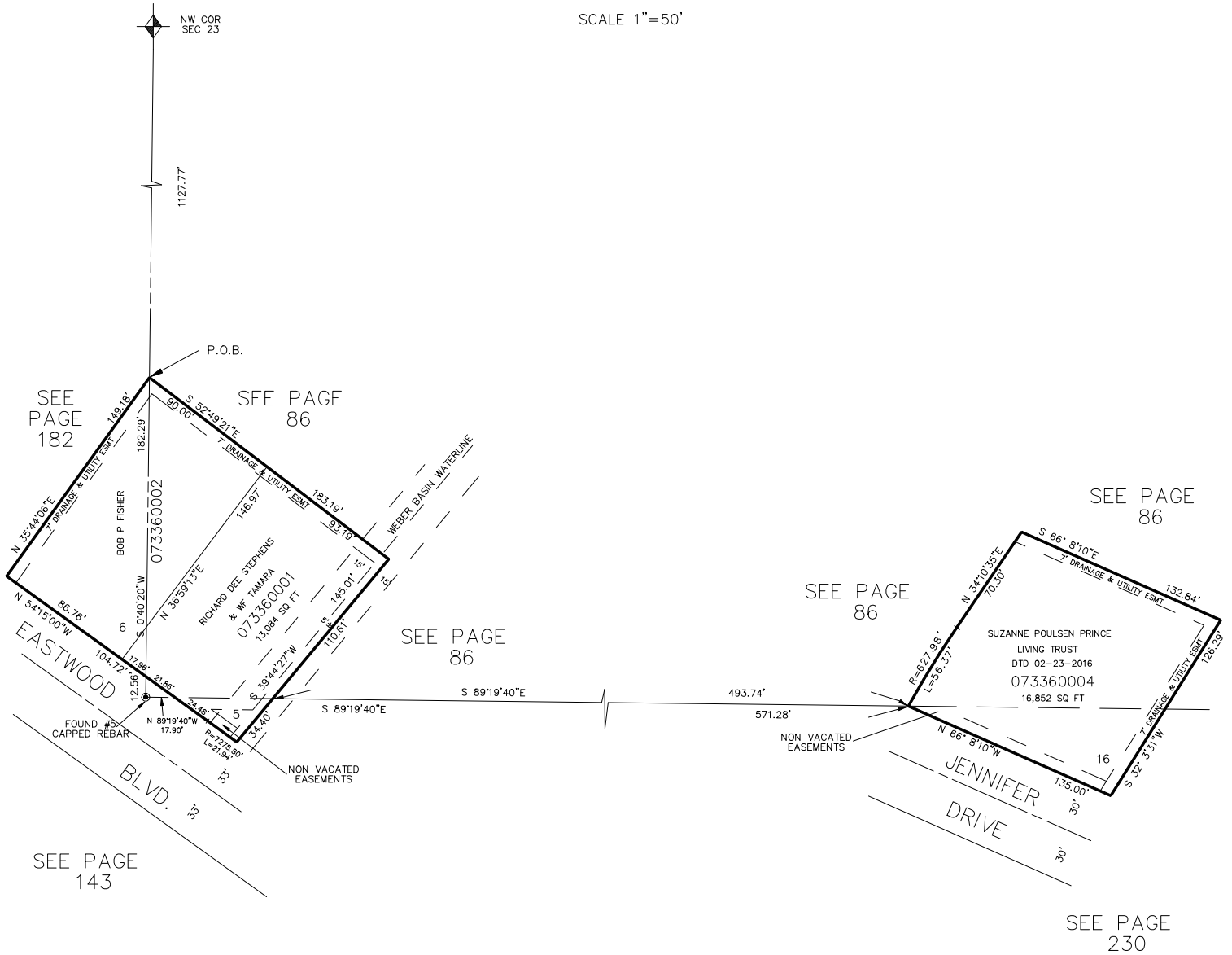
WATERFALL SUBDIVISION

PHASE ONE

TAXING UNITS: 159

IN WEBER COUNTY

SCALE 1"=50'



FOR COMPLETE ENG. DATA SEE
ORIGINAL DEDICATION PLAT IN
BOOK 30, PAGE 12 OF RECORDS.